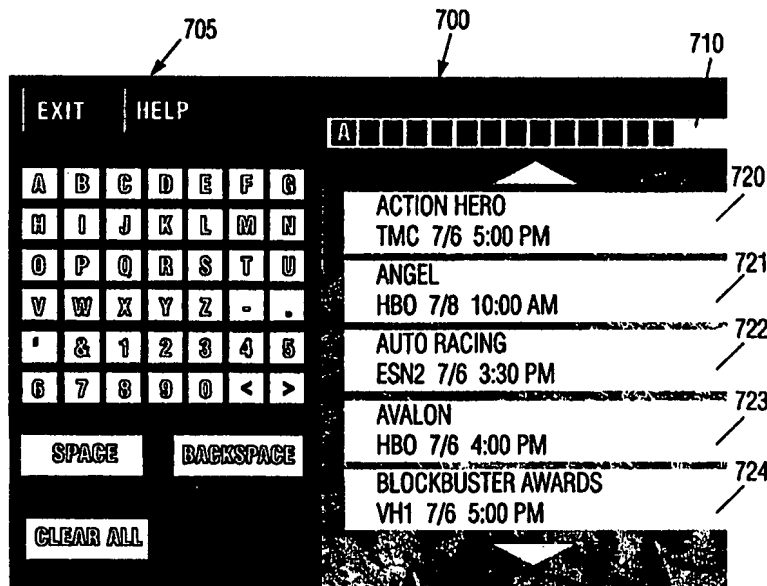




INTERNATIONAL APPLICATION PUBLISHED UNDER THE PATENT COOPERATION TREATY (PCT)

<p>(51) International Patent Classification ⁶ : H04N 5/445, 7/088</p>	<p>A1</p>	<p>(11) International Publication Number: WO 98/56173 (43) International Publication Date: 10 December 1998 (10.12.98)</p>
<p>(21) International Application Number: PCT/US98/11636 (22) International Filing Date: 5 June 1998 (05.06.98) (30) Priority Data: 60/048,879 6 June 1997 (06.06.97) US (71) Applicant (for all designated States except US): THOMSON CONSUMER ELECTRONICS, INC. [US/US]; 10330 North Meridian Street, Indianapolis, IN 46290-1024 (US). (72) Inventors; and (75) Inventors/Applicants (for US only): RANDAL, Darrel, Wayne [US/US]; 2324 West U.S. Highway 36, Danville, IN 46122 (US). SCHNEIDEWEND, Daniel, Richard [US/US]; 11221 Tall Trees Drive, Fishers, IN 46038 (US). McLANE, Michael, Joseph [US/US]; 720 Sherwood Drive, Indianapolis, IN 46240 (US). BROWN, Megan, Louise [US/US]; 11321 Rollings Springs Drive, Carmel, IN 46033 (US). WESTLAKE, Mark, Sheridan [US/US]; 13105 Connor Knoll Parkway, Fishers, IN 46038 (US). (74) Agents: TRIPOLI, Joseph, S. et al.; GE & RCA Licensing Management Operation, Inc., P.O. Box 5312, Princeton, NJ 08543 (US).</p>	<p>(81) Designated States: AL, AM, AT, AU, AZ, BA, BB, BG, BR, BY, CA, CH, CN, CU, CZ, DE, DK, EE, ES, FI, GB, GE, GH, GM, GW, HU, ID, IL, IS, JP, KE, KG, KP, KR, KZ, LC, LK, LR, LS, LT, LU, LV, MD, MG, MK, MN, MW, MX, NO, NZ, PL, PT, RO, RU, SD, SE, SG, SI, SK, SL, TJ, TM, TR, TT, UA, UG, US, UZ, VN, YU, ZW, ARIPO patent (GH, GM, KE, LS, MW, SD, SZ, UG, ZW), Eurasian patent (AM, AZ, BY, KG, KZ, MD, RU, TJ, TM), European patent (AT, BE, CH, CY, DE, DK, ES, FI, FR, GB, GR, IE, IT, LU, MC, NL, PT, SE), OAPI patent (BF, BJ, CF, CG, CI, CM, GA, GN, ML, MR, NE, SN, TD, TG).</p> <p>Published With international search report.</p>	

(54) Title: SYSTEM AND METHOD FOR SORTING PROGRAM GUIDE INFORMATION



(57) Abstract

An apparatus and a method for processing channel guide information containing program descriptions for programs, including the following. The channel guide information is stored in a memory. A user-entered request and a text string having one or more user-selectable characters may be entered by a user. The programs are then sorted in alphabetical order according to the program description to form an alpha-sorted list, in response to the user request. An alphabetical list of programs is then displayed with the first program on the list being a program having a program description matching the user-entered text string, if one can be located.

FOR THE PURPOSES OF INFORMATION ONLY

Codes used to identify States party to the PCT on the front pages of pamphlets publishing international applications under the PCT.

AL	Albania	ES	Spain	LS	Lesotho	SI	Slovenia
AM	Armenia	FI	Finland	LT	Lithuania	SK	Slovakia
AT	Austria	FR	France	LU	Luxembourg	SN	Senegal
AU	Australia	GA	Gabon	LV	Latvia	SZ	Swaziland
AZ	Azerbaijan	GB	United Kingdom	MC	Monaco	TD	Chad
BA	Bosnia and Herzegovina	GE	Georgia	MD	Republic of Moldova	TG	Togo
BB	Barbados	GH	Ghana	MG	Madagascar	TJ	Tajikistan
BE	Belgium	GN	Guinea	MK	The former Yugoslav Republic of Macedonia	TM	Turkmenistan
BF	Burkina Faso	GR	Greece	ML	Mali	TR	Turkey
BG	Bulgaria	HU	Hungary	MN	Mongolia	TT	Trinidad and Tobago
BJ	Benin	IE	Ireland	MR	Mauritania	UA	Ukraine
BR	Brazil	IL	Israel	MW	Malawi	UG	Uganda
BY	Belarus	IS	Iceland	MX	Mexico	US	United States of America
CA	Canada	IT	Italy	NE	Niger	UZ	Uzbekistan
CF	Central African Republic	JP	Japan	NL	Netherlands	VN	Viet Nam
CG	Congo	KE	Kenya	NO	Norway	YU	Yugoslavia
CH	Switzerland	KG	Kyrgyzstan	NZ	New Zealand	ZW	Zimbabwe
CI	Côte d'Ivoire	KP	Democratic People's Republic of Korea	PL	Poland		
CM	Cameroon	KR	Republic of Korea	PT	Portugal		
CN	China	KZ	Kazakstan	RO	Romania		
CU	Cuba	LC	Saint Lucia	RU	Russian Federation		
CZ	Czech Republic	LI	Liechtenstein	SD	Sudan		
DE	Germany	LK	Sri Lanka	SE	Sweden		
DK	Denmark	LR	Liberia	SG	Singapore		
EE	Estonia						

SYSTEM AND METHOD FOR SORTING PROGRAM GUIDE INFORMATION

5 FIELD OF INVENTION

This invention generally relates to the field of program guide information processing and more particularly, to a system and method of sorting program guide information alphabetically.

10 BACKGROUND OF INVENTION

Electronic devices such as televisions and personal computers (PC) require a control system that includes a user interface system. Typically, a user interface provides information to a user and simplifies use of the device. One example of a user interface is an
15 Electronic Program Guide (EPG) in a television system.

An EPG is an interactive, on-screen display feature that displays information analogous to TV listings found in local newspapers or other print media. In addition, an EPG also includes information necessary for collating and decoding programs. An EPG
20 provides information about each program within the time frames covered by the EPG which typically ranges from the next hour up to seven days. The information contained in an EPG includes programming characteristics such as channel number, program title, start time, end time, elapsed time, time remaining, rating (if
25 available), topic, theme, and a brief description of the program's content. EPGs are usually arranged in a two-dimensional table or grid format with time information on one axis and channel information on the other axis.

Unlike non-interactive guides that reside on a dedicated channel and merely scroll through the current programming on the other channels for the next 2 to 3 hours, EPGs allow viewers to select any channel at any time during some period into the future, e.g., up to
5 seven days forward. Further EPG features include the ability to highlight individual cells of the grid containing program information. Once highlighted, the viewer can perform functions pertaining to that selected program. For instance, the viewer could instantly switch to that program if it is currently being aired. Viewers could also
10 program one touch video cassette recording (VCR) or the like if the television is properly configured and connected to a recording device. Such EPGs are known in the art and described, for instance, in US Pat. Nos. 5,353,121; 5,479,268; and 5,479,266 issued to Young et al. and assigned to StarSight Telecast, Inc.

15 In addition, US Pat. No. 5,515,106, issued to Chaney etc., and assigned to the same assignee of the present invention, describes in detail an exemplary embodiment including data packet structure necessary to implement an exemplary program guide system. The exemplary data packet structure is designed so that both the channel
20 information (e.g., channel name, call letters, channel number, type, etc.) and the program description information (e.g., title, rating, star, etc.) relating to a program may be transmitted from a program guide database provider to a receiving apparatus efficiently.

25 User interfaces such as EPGs are applicable to analog and digital television systems and to other electronic devices such as personal computers. As electronic devices become increasingly complex with a multitude of features, the need for a robust and easy-to-use user interface becomes ever more important. For example,

separate electronic systems having respective interfaces for controlling features of each system are now being combined into a single system requiring a single user interface. One specific example is the so-called PCTV which includes features of both a personal
5 computer and a television. The user interface system for such a device must provide both clear communication of computer and television related information and provide for simple control of both computer and television related features.

One problem with the current EPG system is that the
10 program guide is typically provided in a fixed format (i.e., in a two-dimensional grid format with time information on one axis and channel information on the other axis, as described above). The users are not typically provided with ways to customize the program guide list or to categorize the program guide information.

15

SUMMARY OF THE INVENTION

Therefore, the present inventors recognize that it is desirable to be able to provide a user with sorting capabilities so that the user's EPG may be customized.

20 In accordance with aspects of the present invention, an apparatus is provided in which program guide information containing a respective program description for programs are processed to form a channel guide, comprising:

memory means for storing said program guide
25 information;

user control means for entering a user request and a text string having one or more user-selectable characters;

control means for sorting said programs in alphabetical order according to said program description to form an alpha-sorted list, in response to said user request, and for locating a first program with a program description matching said text string.

5 In accordance with other aspects of the invention, a method is provided for processing channel guide information for programs, comprising the steps of:

storing said channel guide information in memory;

10 entering a text string having one or more user-selectable characters;

performing an alphabetical sort of said programs according to said text string; and

displaying said alphabetized list of said programs beginning with a first program matching said text string.

15 It is to be noted that the term "alphabet" as used in this application also include numeric characters (i.e., 1, 2, 3,...etc.) Therefore, the terms "alpha-sort", "sort alphabetically", etc. also include sorting via a numeric character as described in more detail below.

20

BRIEF DESCRIPTION OF THE DRAWINGS

In the drawing:

25 Fig. 1 shows an example of a television system suitable for processing program guide information in accordance with the present invention.

Fig. 2. shows an example of a digital video processing apparatus suitable for processing program guide information in accordance with the present invention.

Fig. 3 shows a block diagram of a specific implementation of a digital satellite system suitable for processing program guide information in accordance with the present invention.

5 Fig. 4 shows an example of a program guide being displayed.

Fig. 5 shows a flowchart, in accordance with the present invention for processing user inputs and for sorting program guide information according to the present invention.

10 Fig. 6 shows another flowchart, in accordance with the present invention for processing user inputs and for sorting program guide information according to the present invention.

Fig. 7 shows an example of a display screen for interfacing with a user of the present invention.

15 Fig. 8 shows another example of a display screen for interfacing with a user of the present invention.

Fig. 9 shows another example of a user interface screen, including provision for selection of program descriptive field.

DETAILED DESCRIPTION

20 Fig. 1 shows an example of a television system suitable for processing and sorting program guide information in accordance with the present invention. The television receiver shown in Fig. 1 is capable of processing both analog NTSC television signals and internet information. The system shown in FIG. 1 has a first input 1100 for
25 receiving television signal RF_IN at RF frequencies and a second input 1102 for receiving baseband television signal VIDEO IN. Signal RF_IN may be supplied from a source such as an antenna or cable system while signal VIDEO IN may be supplied, for example, by a video

cassette recorder (VCR). Tuner 1105 and IF processor 1130 operate in a conventional manner for tuning and demodulating a particular television signal that is included in signal RF_IN. IF processor 1130 produces baseband video signal VIDEO representing the video
5 program portion of the tuned television signal. IF processor 1130 also produces a baseband audio signal that is coupled to an audio processing section (not shown in FIG. 1) for further audio processing. Although FIG. 1 shows input 1102 as a baseband signal, the television receiver could include a second tuner and IF processor similar to units
10 1105 and 1130 for producing a second baseband video signal from either signal RF_IN or from a second RF signal source.

The system shown in FIG. 1 also includes a main microprocessor (mP) 1110 for controlling components of the television receiver such as tuner 1105, picture-in-picture processing
15 unit 1140, video signal processor 1155, and StarSight® data processing module 1160. As used herein, the term "microprocessor" represents various devices including, but not limited to, microprocessors, microcomputers, microcontrollers and controllers. Microprocessor 1110 controls the system by sending and receiving
20 both commands and data via serial data bus I²C BUS which utilizes the well-known I²C serial data bus protocol. More specifically, central processing unit (CPU) 1112 within mP 1110 executes control programs contained within memory, such as EEPROM 1127 shown in FIG. 1, in response to commands provided by a user, e.g., via IR
25 remote control 1125 and IR receiver 1122. For example, activation of a "CHANNEL UP" feature on remote control 1125 causes CPU 1112 to send a "change channel" command along with channel data to tuner

1105 via I²C BUS. As a result, tuner 1105 tunes the next channel in the channel scan list. Other examples of control programs stored in EEPROM 1127 are software for implementing the operations shown in Figs. 5 and 6 in accordance with the present invention as to be
5 discussed below.

Main microprocessor 1110 also controls the operation of a communications interface unit 1113 for providing the capability to upload and download information to and from the internet. Communication interface unit 1113 includes, for example, a modem
10 for connecting to an internet service provider, e.g., via a telephone line or via a cable television line. The communication capability allows the system shown in Figure 1 to provide email capability and internet related features such as web browsing in addition to receiving television programming.

15 CPU 1112 controls functions included within mP 1110 via bus 1119 within mP 1110. In particular, CPU 1112 controls auxiliary data processor 1115 and on-screen display (OSD) processor 1117. Auxiliary data processor 1115 extracts auxiliary data such as StarSight[®] data from video signal PIPV.

20 StarSight[®] data which provides program guide data information in a known format is typically received only on a particular television channel and the television receiver must tune that channel to extract StarSight[®] data. To prevent StarSight[®] data extraction from interfering with normal use of the television receiver,
25 CPU 1112 initiates StarSight[®] data extraction by tuning the particular channel only during a time period when the television receiver is usually not in use (e.g., 2:00 AM). At that time, CPU 1112 configures

decoder 1115 such that auxiliary data is extracted from horizontal line intervals such as line 16 that are used for StarSight® data. CPU 1112 controls the transfer of extracted StarSight® data from decoder 1115 via I²C BUS to StarSight® module 1160. A processor internal to
5 the module formats and stores the data in memory within the module. In response to the StarSight® EPG display being activated (e.g., a user activating a particular key on remote control 125), CPU 1112 transfers formatted StarSight® EPG display data from StarSight® module 1160 via I²C BUS to OSD processor 1117.

10 OSD processor 1117 operates in a conventional manner to produce R, G, and B video signals OSD_RGB that, when coupled to a display device, will produce a displayed image representing on-screen display information such as graphics and/or text comprising an EPG. OSD processor 1117 also produces control signal FSW which is
15 intended to control a fast switch for inserting signals OSD_RGB into the system's video output signal at times when an on-screen display is to be displayed. For example, when a user enables an EPG, e.g., by activating a particular switch on remote control 1125, CPU 1112 enables processor 1117. In response, processor 1117 produces
20 signals OSD_RGB representing the program guide data information previously extracted and already stored in memory, as discussed above. Processor 1117 also produces signal FSW indicating when the EPG is to be displayed.

Video signal processor (VSP) 1155 performs conventional
25 video signal processing functions, such as luma and chroma processing. Output signals produced by VSP 1155 are suitable for coupling to a display device, e.g., a kinescope or LCD device (not

shown in FIG. 1), for producing a displayed image. VSP 1155 also includes a fast switch for coupling signals produced by OSD processor 1117 to the output video signal path at times when graphics and/or text is to be included in the displayed image. The fast switch is
5 controlled by control signal FSW which is generated by OSD processor 1117 in main microprocessor 1110 at times when text and/or graphics are to be displayed.

The input signal for VSP 1155 is signal PIPV that is output by picture-in-picture (PIP) processor 1140. When a user activates
10 PIP mode, signal PIPV represents a large picture (large pix) into which a small picture (small pix) is inset. When PIP mode is inactive, signal PIPV represents just the large pix, i.e., no small pix signal is included in signal PIPV. PIP processor 1140 provides the described functionality in a conventional manner using features included in unit
15 1140 such as a video switch, analog-to-digital converter (ADC), RAM, and digital to analog converter (DAC).

For an EPG display, the display data included in the EPG display is produced by OSD processor 1117 and included in the output signal by VSP 1155 in response to fast switch signal FSW. When
20 controller 1110 detects activation of the EPG display, e.g., when a user presses an appropriate key on remote control 1125, controller 1110 causes OSD processor 1117 to produce the EPG display using information such as program guide data from StarSight® module 1160. Controller 1110 causes VSP 1155 to combine the EPG display
25 data from OSD processor 1117 and the video image signal in response to signal FSW to produce a display including EPG. The EPG can occupy all or only a portion of the display area.

When the EPG display is active, controller 1110 executes a control program stored in EEPROM 1127. The control program monitors the location of a position indicator, such as a cursor and/or highlighting, in the EPG display. A user controls the location of the position indicator using direction and selection keys of remote control 1125. Alternatively, the system could include a mouse device. Controller 1110 detects activation of a selection device, such as clicking a mouse button, and evaluates current cursor location information in conjunction with EPG data being displayed to determine the function desired, e.g., tuning a particular program. Controller 1110 subsequently activates the control action associated with the selected feature.

The processing and displaying of a program guide in accordance with the present invention may be implemented using a combination of software and hardware. For example, referring to Figure 1, display of an EPG may be implemented by software in memory such as EEPROM 1127. Activation of an EPG, e.g., by a user pressing an EPG related button on remote control 1125, causes CPU 1112 to execute the EPG software routine. As part of generating an EPG display, CPU 1112 also accesses EPG data and graphics that may be stored in StarSight module 1160 via the I2C bus. Under control of the EPG software routine stored in EEPROM 1127, CPU 1112 enables OSD processor 1117 which formats the EPG data into a form suitable for producing an OSD representing the EPG data and graphics. The OSD data produced by OSD processor 1117 is coupled to video signal processor (VSP) 1155 via signal lines OSD_RGB. A fast switch in VSP 1155 couples the EPG OSD data to the output of VSP 1155 under control of signal FSW. That is, the software routine being executed by

CPU 1112 determines when the EPG data is to be displayed (e.g., what portion of the display) and sets signal FSW to the appropriate state for causing the fast switch to couple the EPG data to the output.

An exemplary embodiment of the features of the system shown in FIG. 1 that have been described thus far comprises an
5 ST9296 microprocessor produced by SGS-Thomson Microelectronics for providing the features associated with mP 1110; an M65616 picture-in-picture processor produced by Mitsubishi for providing the described basic PIP functionality associated with PIP processor 1140;
10 and an LA7612 video signal processor produced by Sanyo for providing the functions of VSP 1155.

Fig. 2 shows another example of an electronic device capable of processing and sorting program guide information in accordance with the present invention. As described below, the
15 system shown in Figure 2 is an MPEG compatible system for receiving MPEG encoded transport streams representing broadcast programs. However, the system shown in Figure 2 is exemplary only. User interface systems are also applicable to other types of digital signal processing devices including non-MPEG compatible systems, involving
20 other types of encoded datastreams. For example, other devices include digital video disc (DVD) systems and MPEG program streams, and systems combining computer and television functions such as the so-called "PCTV". Further, although the system described below is described as processing broadcast programs, this is exemplary only.
25 The term 'program' is used to represent any form of packetized data such as telephone messages, computer programs, internet data or other communications, for example.

In overview, in the video receiver system of Figure 2, a carrier modulated with video data is received by antenna 10 and processed by unit 15. The resultant digital output signal is demodulated by demodulator 20 and decoded by decoder 30. The
5 output from decoder 30 is processed by transport system 25 which is responsive to commands from remote control unit 125. System 25 provides compressed data outputs for storage, further decoding, or communication to other devices.

Video and audio decoders 85 and 80 respectively, decode
10 the compressed data from system 25 to provide outputs for display. Data port 75 provides an interface for communication of the compressed data from system 25 to other devices such as a computer or High Definition Television (HDTV) receiver, for example. Storage device 90 stores the compressed data from system 25 on storage
15 medium 105. Device 90, in a playback mode also supports retrieval of the compressed data from storage medium 105 for processing by system 25 for decoding, communication to other devices or storage on a different storage medium (not shown to simplify drawing).

Considering Figure 2 in detail, a carrier modulated with
20 video data received by antenna 10, is converted to digital form and processed by input processor 15. Processor 15 includes radio frequency (RF) tuner and intermediate frequency (IF) mixer and amplification stages for down-converting the input video signal to a lower frequency band suitable for further processing. The resultant
25 digital output signal is demodulated by demodulator 20 and decoded by decoder 30. The output from decoder 30 is further processed by transport system 25.

Multiplexer (mux) 37 of service detector 33 is provided, via selector 35, with either the output from decoder 30, or the decoder 30 output further processed by a descrambling unit 40. Descrambling unit 40 may be, for example, a removable unit such as a smart card in accordance with ISO 7816 and NRSS (National Renewable Security Standards) Committee standards (the NRSS removable conditional access system is defined in EIA Draft Document IS-679, Project PN-3639). Selector 35 detects the presence of an insertable, compatible, descrambling card and provides the output of unit 40 to mux 37 only if the card is currently inserted in the video receiver unit. Otherwise selector 35 provides the output from decoder 30 to mux 37. The presence of the insertable card permits unit 40 to descramble additional premium program channels, for example, and provide additional program services to a viewer. It should be noted that in the preferred embodiment NRSS unit 40 and smart card unit 130 (smart card unit 130 is discussed later) share the same system 25 interface such that only either an NRSS card or a smart card may be inserted at any one time. However, the interfaces may also be separate to allow parallel operation.

The data provided to mux 37 from selector 35 is in the form of an MPEG compliant packetized transport datastream as defined in MPEG systems standard section 2.4 and includes program guide information and the data content of one or more program channels. The individual packets that comprise particular program channels are identified by Packet Identifiers (PIDs). The transport stream contains Program Specific Information (PSI) for use in identifying the PIDs and assembling individual data packets to recover the content of all the program channels that comprise the

packetized datastream. Transport system 25, under the control of the system controller 115, acquires and collates program guide information from the input transport stream, storage device 90 or an internet service provider via the communication interface unit 116.

5 The individual packets that comprise either particular program channel content or Program Guide information, are identified by their Packet Identifiers (PIDs) contained within header information. As discussed above, the program description may comprise different program descriptive fields such as title, star, rating, etc., relating to a
10 program.

The user interface incorporated in the video receiver shown in Figure 2 enables a user to activate various features by selecting a desired feature from an on-screen display (OSD) menu. The OSD menu may include an electronic program guide (EPG) as
15 described above and other features discussed below. Data representing information displayed in the OSD menu is generated by system controller 115 in response to stored program guide information, stored graphics information, and/or program guide and graphics information received via the input signal (e.g., StarSight
20 data) as described above and in accordance with exemplary control programs to be shown in Figs. 5 and 6 and to be discussed below. The software control programs may be stored, for example, in embedded memory (not shown) of system controller 115.

Using remote control unit 125 (or other selection means
25 such as a mouse) a user can select from the OSD menu items such as a program to be viewed, a program to be stored, the type of storage media and manner of storage. System controller 115 uses the selection information, provided via interface 120, to configure system

25 to select the programs for storage and display and to generate PSI
suitable for the selected storage device and media. Controller 115
configures system 25 elements 45, 47, 50, 55, 65 and 95 by setting
control register values within these elements via a data bus and by
5 selecting signal paths via muxes 37 and 110 with control signal C.

In response to control signal C, mux 37 selects either, the
transport stream from unit 35, or in a playback mode, a datastream
retrieved from storage device 90 via store interface 95. In normal,
non-playback operation, the data packets comprising the program
10 that the user selected to view are identified by their PIDs by selection
unit 45. If an encryption indicator in the header data of the selected
program packets indicates the packets are encrypted, unit 45
provides the packets to decryption unit 50. Otherwise unit 45
provides non-encrypted packets to transport decoder 55. Similarly,
15 the data packets comprising the programs that the user selected for
storage are identified by their PIDs by selection unit 47. Unit 47
provides encrypted packets to decryption unit 50 or non-encrypted
packets to mux 110 based on the packet header encryption indicator
information.

20 The functions of decryptors 40 and 50 may be
implemented in a single removable smart card which is compatible
with the NRSS standard. This approach places all security related
functions in one removable unit that can easily be replaced if a
service provider decides to change encryption technique or to permit
25 easily changing the security system, e.g., to descramble a different
service.

Units 45 and 47 employ PID detection filters that match
the PIDs of incoming packets provided by mux 37 with PID values

pre-loaded in control registers within units 45 and 47 by controller 115. The pre-loaded PIDs are used in units 47 and 45 to identify the data packets that are to be stored and the data packets that are to be decoded for use in providing a video image. The pre-loaded PIDs are stored in look-up tables in units 45 and 47. The PID look-up tables are memory mapped to encryption key tables in units 45 and 47 that associate encryption keys with each pre-loaded PID. The memory mapped PID and encryption key look-up tables permit units 45 and 47 to match encrypted packets containing a pre-loaded PID with associated encryption keys that permit their decryption. Non-encrypted packets do not have associated encryption keys. Units 45 and 47 provide both identified packets and their associated encryption keys to decryptor 50. The PID look-up table in unit 45 is also memory mapped to a destination table that matches packets containing pre-loaded PIDs with corresponding destination buffer locations in packet buffer 60. The encryption keys and destination buffer location addresses associated with the programs selected by a user for viewing or storage are pre-loaded into units 45 and 47 along with the assigned PIDs by controller 115. The encryption keys are generated by ISO 7816-3 compliant smart card system 130 from encryption codes extracted from the input datastream. The generation of the encryption keys is subject to customer entitlement determined from coded information in the input datastream and/or pre-stored on the insertable smart card itself (International Standards Organization document ISO 7816-3 of 1989 defines the interface and signal structures for a smart card system).

The packets provided by units 45 and 47 to unit 50 are encrypted using an encryption techniques such as the Data Encryption

Standard (DES) defined in Federal Information Standards (FIPS) Publications 46, 74 and 81 provided by the National Technical Information Service, Department of Commerce. Unit 50 decrypts the encrypted packets using corresponding encryption keys provided by
5 units 45 and 47 by applying decryption techniques appropriate for the selected encryption algorithm. The decrypted packets from unit 50 and the non-encrypted packets from unit 45 that comprise the program for display are provided to decoder 55. The decrypted packets from unit 50 and the non-encrypted packets from unit 47
10 that comprise the program for storage are provided to mux 110.

Unit 60 contains four packet buffers accessible by controller 115. One of the buffers is assigned to hold data destined for use by controller 115 and the other three buffers are assigned to hold packets that are destined for use by application devices 75, 80
15 and 85. Access to the packets stored in the four buffers within unit 60 by both controller 115 and by application interface 70 is controlled by buffer control unit 65. Unit 45 provides a destination flag to unit 65 for each packet identified by unit 45 for decoding. The flags indicate the individual unit 60 destination locations for the
20 identified packets and are stored by control unit 65 in an internal memory table. Control unit 65 determines a series of read and write pointers associated with packets stored in buffer 60 based on the First-In-First-Out (FIFO) principle. The write pointers in conjunction with the destination flags permit sequential storage of an identified
25 packet from units 45 or 50 in the next empty location within the appropriate destination buffer in unit 60. The read pointers permit sequential reading of packets from the appropriate unit 60 destination buffers by controller 115 and application interface 70.

The non-encrypted and decrypted packets provided by units 45 and 50 to decoder 55 contain a transport header as defined by section 2.4.3.2 of the MPEG systems standard. Decoder 55 determines from the transport header whether the non-encrypted and decrypted packets contain an adaptation field (per the MPEG systems standard). The adaptation field contains timing information including, for example, Program Clock References (PCRs) that permit synchronization and decoding of content packets. Upon detection of a timing information packet, that is a packet containing an adaptation field, decoder 55 signals controller 115, via an interrupt mechanism by setting a system interrupt, that the packet has been received. In addition, decoder 55 changes the timing packet destination flag in unit 65 and provides the packet to unit 60. By changing the unit 65 destination flag, unit 65 diverts the timing information packet provided by decoder 55 to the unit 60 buffer location assigned to hold data for use by controller 115, instead of an application buffer location.

Upon receiving the system interrupt set by decoder 55, controller 115 reads the timing information and PCR value and stores it in internal memory. PCR values of successive timing information packets are used by controller 115 to adjust the system master clock (27 MHz). The difference between PCR based and master clock based estimates of the time interval between the receipt of successive timing packets, generated by controller 115, is used to adjust the system master clock. Controller 115 achieves this by applying the derived time estimate difference to adjust the input control voltage of a voltage controlled oscillator used to generate the master clock.

Controller 115 resets the system interrupt after storing the timing information in internal memory.

Packets received by decoder 55 from units 45 and 50 that contain program content including audio, video, caption, and other information, are directed by unit 65 from decoder 55 to the designated application device buffers in packet buffer 60. Application control unit 70 sequentially retrieves the audio, video, caption and other data from the designated buffers in buffer 60 and provides the data to corresponding application devices 75, 80 and 85. The application devices comprise audio and video decoders 80 and 85 and high speed data port 75. For example, packet data corresponding to a composite program guide generated by the controller 115 as described above, may be transported to the video decoder 85 for formatting into video signal suitable for display on a monitor (not shown) connected to the video decoder 85. Also, for example, data port 75 may be used to provide high speed data such as computer programs, for example, to a computer. Alternatively, port 75 may be used to output data to an HDTV decoder to display images corresponding to a selected program or a program guide, for example.

Packets that contain PSI information are recognized by unit 45 as destined for the controller 115 buffer in unit 60. The PSI packets are directed to this buffer by unit 65 via units 45, 50 and 55 in a similar manner to that described for packets containing program content. Controller 115 reads the PSI from unit 60 and stores it in internal memory.

Controller 115 also generates condensed PSI (CPSI) from the stored PSI and incorporates the CPSI in a packetized datastream suitable for storage on a selectable storage medium. The packet

identification and direction is governed by controller 115 in conjunction with the unit 45 and unit 47 PID, destination and encryption key look-up tables and control unit 65 functions in the manner previously described.

5 In addition, controller 115 is coupled to a communication interface unit 116 that operates in a manner similar to interface unit 1113 in Figure 1. That is, unit 116 provides the capability to upload and download information to and from the internet. Communication interface unit 116 includes, for example, a modem for connecting to
10 an internet service provider, e.g., via a telephone line or via a cable television line. The communication capability allows the system shown in Figure 2 to provide email capability and internet related features such as web browsing in addition to receiving television programming.

15 Fig. 3 is a specific implementation of an electronic device generally shown in Fig. 2 and described in detail above. Fig. 3 represents a satellite receiver set-top box, designed and manufactured by Thomson Consumer Electronics, of Indianapolis, Indiana, USA, for receiving DirecTV™ satellite service provided by
20 Hughes Electronics.

As shown in Fig. 3, the set-top box has a tuner 301 which receives and tunes applicable satellite RF signals in the range of 950-1450 Mhz from a satellite antenna 317. The tuned analog signals are outputted to a link module 302 for further processing. Link module
25 302 is responsible for further processing of the analog tuned signals I_{out} and Q_{out} from tuner 301, including filtering and conditioning of the analog signals, and conversion of the analog signals into a digital output signal, DATA. The link module 302 is implemented as

an integrated circuit (IC). The link module IC is manufactured by SGS-Thomson Microelectronics of Grenoble, France, and has Part No. ST 15339-610.

5 The digital output, DATA, from the link module 302 consists of compliant packetized data stream recognized and processable by the transport unit 303. The datastream, as discussed in detail in relation to Fig. 2, includes program guide data information and the data content of one or more program channels of the satellite broadcast service from Direct TV.

10 The function of the transport unit 303 is the same as the transport system 25 shown in Fig. 2 and discussed already. As described above, the transport unit 303, processes the packetized datastream according to the Packet Identifiers (PID) contained in the header information. The processed datastream are then formatted
15 into MPEG compatible, compressed audio and video packets and coupled to a MEPEG decoder 304 for further processing.

The transport unit 303 is controlled by an Advanced RISC Microprocessor (ARM) 315 which is a RISC based microprocessor. The ARM processor 315 executes control software residing in ROM 308,
20 one component of the software may be, for example, a control program shown in Fig. 5 or Fig. 6 for processing the applicable program guide information in accordance with aspects of the present invention as will be discussed below.

The transport unit 303 may be implemented as an
25 integrated circuit. For example, a preferred embodiment of a transport unit may be an IC manufactured by SGS-Thomson Microelectronics having a Part No. ST 15273-810 or 15103-65C.

The MPEG compatible, compressed audio and video packets from the transport unit 303 are delivered to a MPEG decoder 304. The MPEG decoder decodes the compressed MPEG datastream from the transport unit 303. The decoder 304 then outputs the applicable audio stream which can be further processed by the audio digital-to-analog converter (DAC) 305 to convert the digital audio data into analog sound. The decoder 304 also outputs applicable digital video data which represents image pixel information to a NTSC encoder 306. The NTSC encoder 306 then further processes this video data into NTSC compatible analog video signal so that video images may be displayed on a regular NTSC television screen. The MPEG decoder as described above may also implemented as an integrated circuit. A preferred embodiment of a MPEG decoder is an IC manufactured by SGS-Thomson Microelectronics having Part No. ST i3520.

Additional relevant functional blocks of Fig. 3 includes modem 307 which corresponds to the communication interface unit 116 shown in Fig. 2 for access to the internet, for example. Conditional Access Module (CAM) 309, corresponds to the NRSS decryption unit 130 shown in Fig. 2 for providing conditional access information. Wideband data module 310 corresponds to High Speed Data Port 75 shown in Fig. 2 for providing high speed data access to, for example, a HDTV decoder or a computer. A keyboard/IR Receiver module 312 corresponds to Remote Unit interface 120 shown in Fig. 2 for receiving user control commands from a user control unit 314. Digital AV bus module 313 corresponds to I/O port 100 shown in Fig. 2 for connection to an external device such as a VCR or a DVD player.

Figs. 5 and 6 show the respective flow chart of two exemplary control programs which may be executed by either the CPU 1112 of Fig. 1, Controller 115 of Fig. 2 or ARM microprocessor 315 of Fig. 3 to implement the features according to aspects of the present invention. A person skilled in the art would readily recognize that the control programs when executed by any one of the systems described in Figs. 1-3 will provide the same features in accordance with the present invention. Therefore, to avoid redundancy, the control programs will be described below only with respect to the exemplary hardware implementation shown in Fig. 3.

When a user turns on the system shown in Fig. 3, the system will typically first display a video image of a program previously selected by the user for viewing. The user then may press, for example, a "GUIDE" button (not shown) on a user control unit 314 to display an electronic program guide.

In our exemplary embodiment, upon detecting this user request, the ARM microprocessor 315 in the transport unit 303 processes the program guide data information obtained from a data stream provided by a program guide information provider and formats the guide data information into OSD pixel data corresponding to a full "grid guide" as shown in Fig. 4. The OSD pixel data from the transport unit 303 is forwarded to the MPEG audio/video decoder 304 for generating the guide image, as described before.

The "grid guide" 400 typically occupies the whole screen of a display. The grid guide shows a program schedule in a time-and-channel format, similar to a TV schedule listed in a newspaper. In particular, one dimension (e.g., horizontal) of the guide shows the time information while the other dimension (e.g., vertical) of the guide

shows the channel information. The time information is conveyed to the user by having a time line 401 on the top portion of the guide and is demarked by half hour intervals. The channel information is conveyed to the user by channel numbers 410 - 416 and
5 corresponding channel station names 420 - 426.

In addition, the program guide 400 contains icons Internet 450 and Email 460. By clicking on these icons, a user can surf the internet and send/receive email respectively through the communication interface unit 307. In addition, an internet web site
10 icon may also be incorporated into a grid of a program guide. For example, by clicking on "ESPN.com" within grid 470, the user will automatically be linked to, for example, an ESPN web site.

As shown at step 505 of Fig. 5, a user may request the alphabetical sort feature according to the present invention by
15 selecting the icon 480 shown in Fig. 4 using the user control unit 314. At step 510, upon detecting this user request, the ARM processor 315 will create an alpha-sort user interface screen 700 as shown in Fig. 7.

The ARM processor 315 will also call a library routine as shown at step 515. This library routine 515 will allocate part of the
20 memory 316 as "sort memory" for sorting the program guide data information already downloaded from the guide data provider and previously stored in the memory 316.

In addition, after allocating the sort memory, the ARM processor 315 will first presort all of the programs contained in the
25 program guide data information based on the respective program title for each program, as shown at step 520. To eliminate the effect of essentially meaningless sentence articles such as "a", "an", "the", etc., on the sorting of the programs, the ARM processor 315 will first

reformat the program titles so that all the sentence articles are moved to the end of the titles. The processor 315 will then hash-sort all the reformatted program titles in the current program guide information using the first 4 characters of the reformatted titles. Hash sorting will
5 put all the programs with the same 4 characters in their respective title in the same "bucket", and these buckets are linked together in an alphabetized list, keyed by program title.

The alpha sort interface screen 700 in Fig. 7 contains a "virtual" keyboard 705 having a listing of alpha and numeric
10 characters. A user-entered text string field 710 is displayed on the top of the screen 700. The user may use the navigation buttons (not shown) on the user control unit 314 to select an alpha or numeric character on the virtual key board 705. When the user selects a character on the keyboard, that character appears in the first position
15 of the text string field 710.

Once a character is entered by the user and appears in the text string field 710, the ARM processor 315 will attempt to find, from the presorted list described, a first program with the first character of its program title matching the first entered character, as
20 shown at step 525.

An advantageous aspect of the present invention is that by having already presorted the programs in hashed bins, the ARM processor 315 can quickly get close to the first matched program by simply locating the correct bin. Once the correct bin is found, the
25 ARM processor 315 can then sort the correct bin to obtain the specific program with the first character of the title matching the first entered character, as shown in step 540.

If on the other hand, no program can be found having a title matching the entered text, then the ARM processor 315 will select the program in the position immediately following where the matched program would have been located on the alpha-sorted list, as
5 shown at step 525.

At steps 530, 535, and 545, a loop is set up so that the ARM processor 315 can identify the next several programs having program titles which alphabetically follow the first selected program, until the screen is full or that the end of the list is reached. The result
10 is a display of a list of programs in alphabetized order by their program titles.

As an example, as shown in Fig. 7, when the letter "a" is first selected by a user, the display shows alphabetically the programs with titles which begin with the letter "a", as illustrated by
15 the listing of programs 720-724.

Upon displaying this alphabetical list, the ARM processor 315 will wait to see if the user will enter any additional characters as shown at step 550.

If a second letter is entered, this second letter will be
20 displayed in the second position in the text string field 710. Once this letter is selected, the ARM processor 315 will cause the screen to display alphabetically the programs which begin with the first two letters selected by the user. For example, as shown in Fig. 8, the screen will now display an alphabetically ordered list having
25 programs 820-824, with programs having the characters "au" in their respective title at the top of list.

Another exemplary control program of the present invention is shown in Fig. 6. The only difference between the flow

chart shown in Fig. 6 and Fig. 5 is the inclusion in Fig. 6 of the capability to allow a user to specify which program descriptive field to sort by when a text string is entered by the user as shown at step 612.

5 As described above, program guide information may include different program descriptive fields. A descriptive field, for example, may relate to program title, stars, director, parental rating, or a short summary of the content of a program, etc. The present inventors recognize that it is advantageous to be able to let a user
10 select which descriptive field is to be used to sort the program guide information.

 As shown in Fig. 9, a user interface screen implementing the features provided by the control program of Fig. 6 is displayed. The top portion of the interface screen shows examples of some
15 possible program descriptive fields 901 - 905 that may be part of a program description contained in program guide information. The user can select one of the fields 901-905 by using navigation keys on the user control 314 of Fig. 3.

 As shown in Fig. 9, for example, the field "star" has been
20 selected and thus highlighted. The ARM processor 315 will then use this field as the key to sort the programs in the program guide information. If the user then enters a character "h", for example as shown in Fig. 9, an alphabetical list of programs, alphabetized according to the name of the star for the programs, will appear. In
25 this case, programs which star Harrison Ford are listed first, followed by programs starring Tom Hanks, in alphabetical order, according to the "star" field chosen. This capability of allowing a user to select

which descriptive field to sort the programs provides the user with additional ability to customize the user's program listing.

It is to be understood that the embodiments and variations shown and described herein are for illustrations only and that various modifications may be implemented by those skilled in
5 the art without departing from the scope and spirit of the invention.

CLAIMS

1. An apparatus in which channel guide information containing a respective program description for programs are processed to form a channel guide, comprising:
 - 5 memory means for storing said channel guide information;
 - user control means for entering a user request and a text string having one or more user-selectable characters;
 - control means for sorting said programs in alphabetical order according to said program description to form an alpha-sorted list, in
10 response to said user request, and for locating a first program with a program description matching said text string.

2. The apparatus of claim 1 further comprises means for
15 displaying said alpha-sorted list of programs starting with said first program.

3. The apparatus of claim 1 wherein said respective program description is a respective title for said programs.

- 20 4. The apparatus of claim 1 wherein said user control means further comprises means for allowing a user to specify by which program descriptive field of said respective program description said control means is to sort in response to said user request.

- 25 5. The apparatus of claim 4 wherein said program descriptive field may relate to title, star, director, or context of said programs.

6. The apparatus of claim 1 wherein said control means sorts said programs by first moving any sentence articles of said respective program description to the end of said respective program description.

5

7. An apparatus for processing channel guide information for programs to form a channel guide, comprising:

memory for storing said channel guide information;

10 user control for entering a text string having one or more user-selectable characters;

display for displaying on-screen messages under control of said control means

15 controller for performing an alphabetical sort of said programs according to said text string and causing said on-screen display means to display said alphabetized list of said programs beginning with a first program matching said text string.

8. A method for processing channel guide information containing a respective program description for programs for forming a channel guide, comprising the step of:

20 storing said channel guide information in a memory
receiving a user-entered request and a text string having one or more user-selectable characters;

25 sorting said programs in alphabetical order according to said program description to form an alpha-sorted list, in response to said user request and

locating a first program with a program description matching said text string.

9. The method of claim 8 further comprises the step of displaying said alpha-sorted list of programs starting with said first program.

5

10. The method of claim 8 wherein said respective program description is a respective title for said programs.

11. The method of claim 8 wherein said receiving step further comprises the step of receiving an indication of which program descriptive field is to be used by the sorting step.

10

12. The method of claim 11 wherein said program descriptive field may relate to title, star, rating, director or content of said programs.

15

13. The apparatus of claim 8 wherein said sorting step further comprises the step of first moving any sentence articles of said respective program description to the end of said respective program description.

20

14. A method of processing channel guide information for programs, comprising the steps of:

storing said channel guide information in memory;
entering a text string having one or more user-selectable characters;

25

performing an alphabetical sort of said programs according to said text string; and

displaying said alphabetized list of said programs beginning with a first program matching said text string.

- 5 15. The apparatus of claim 1 wherein if said control means failed to locate said first program having a program description matching said text string, the next program on said alpha-sorted list immediately following the position where said first program would have been located is selected instead.
- 10 16. The method of claim 8, wherein if said locating step failed to locate said first program, the next program on said alpha-sorted list immediately following the position where said first program would have been located is selected instead.

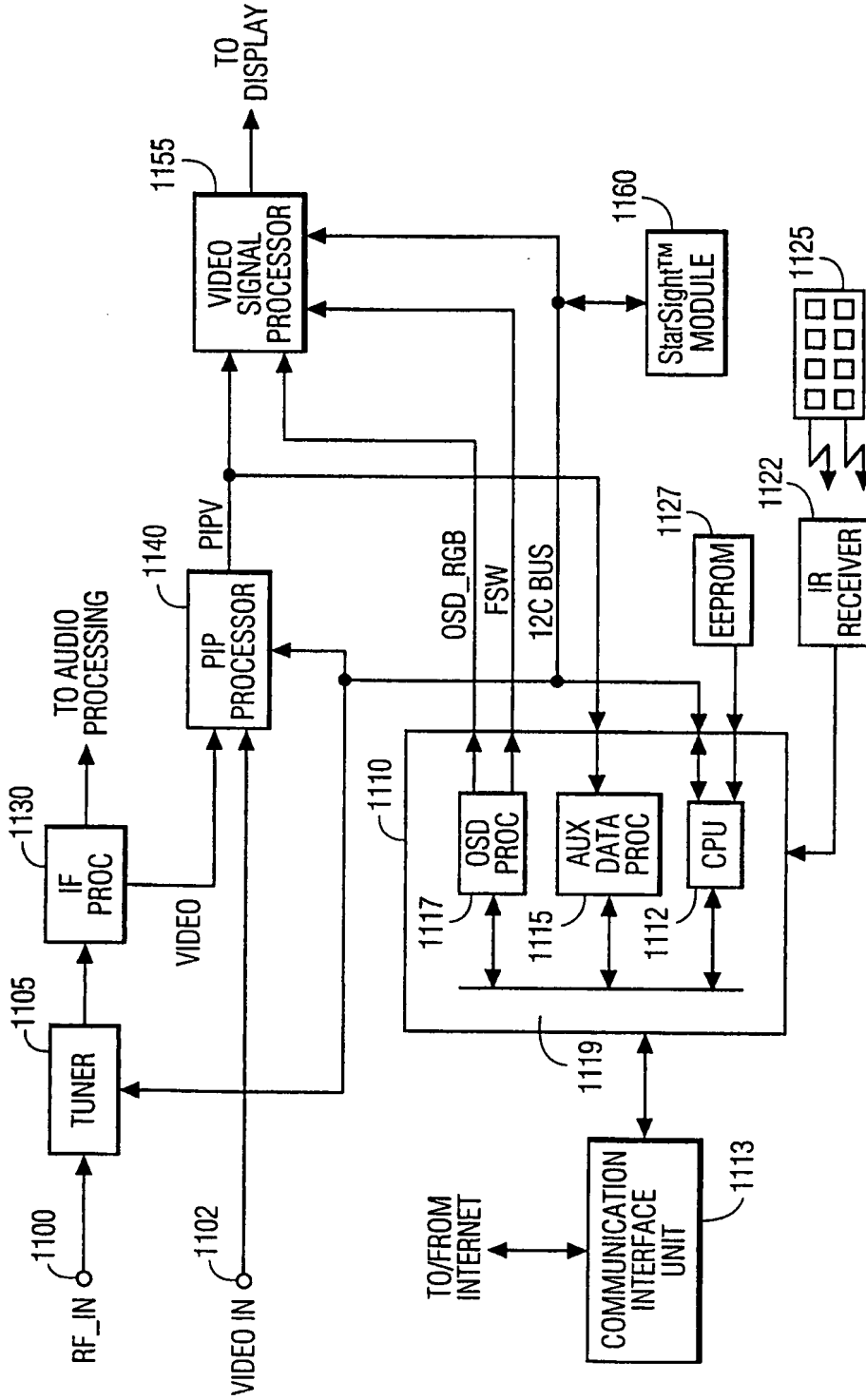


FIG. 1

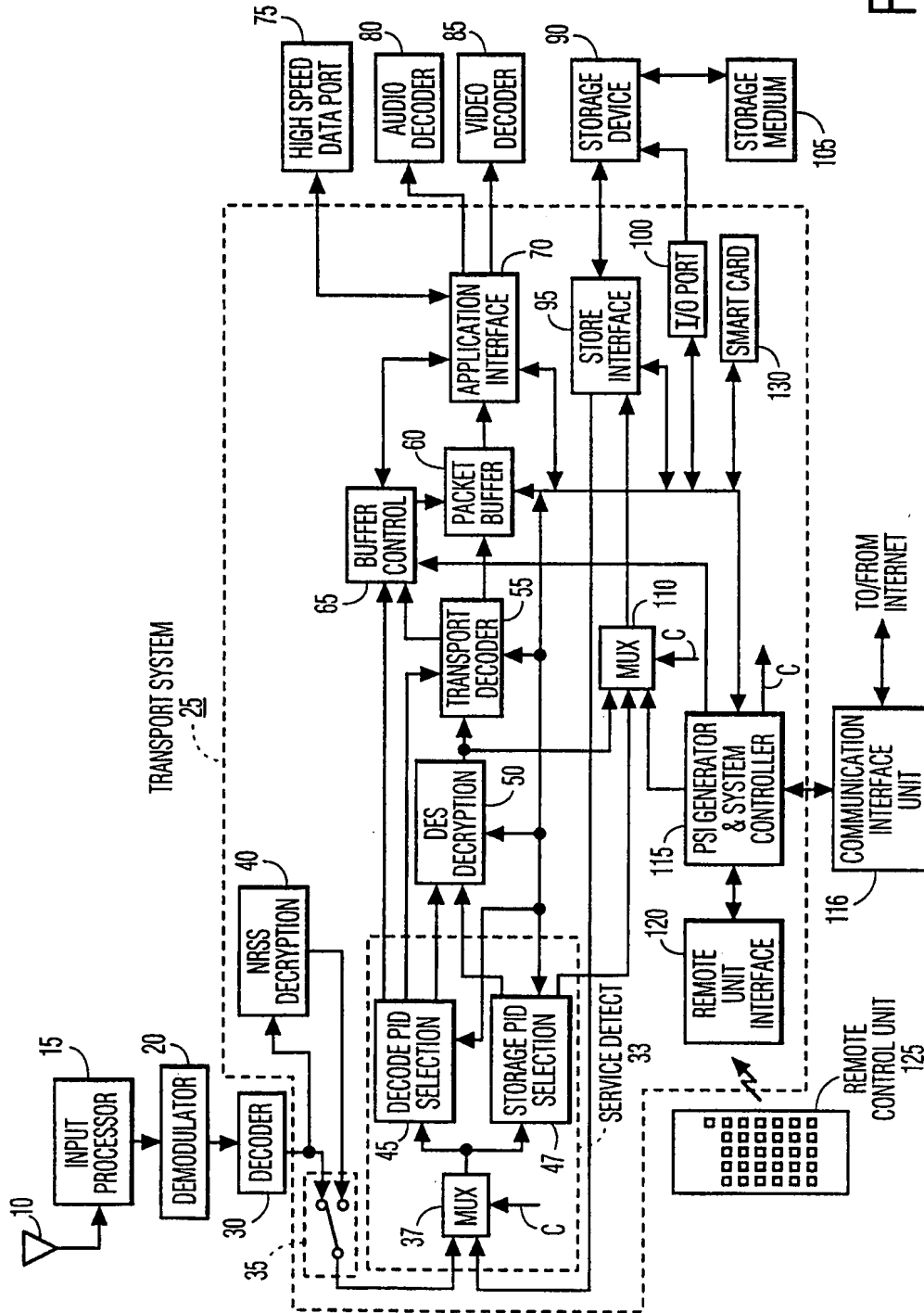


FIG. 2

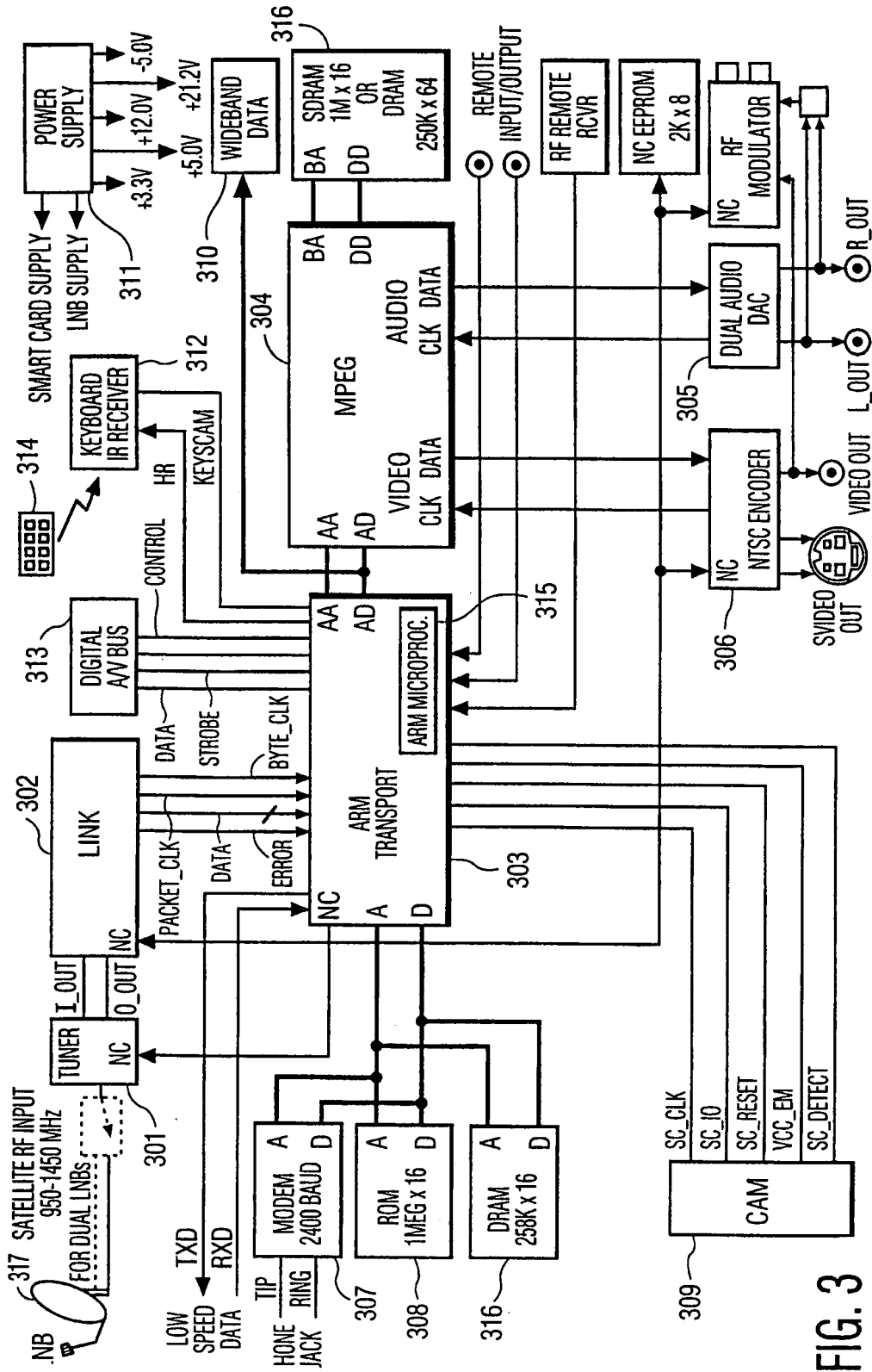


FIG. 3

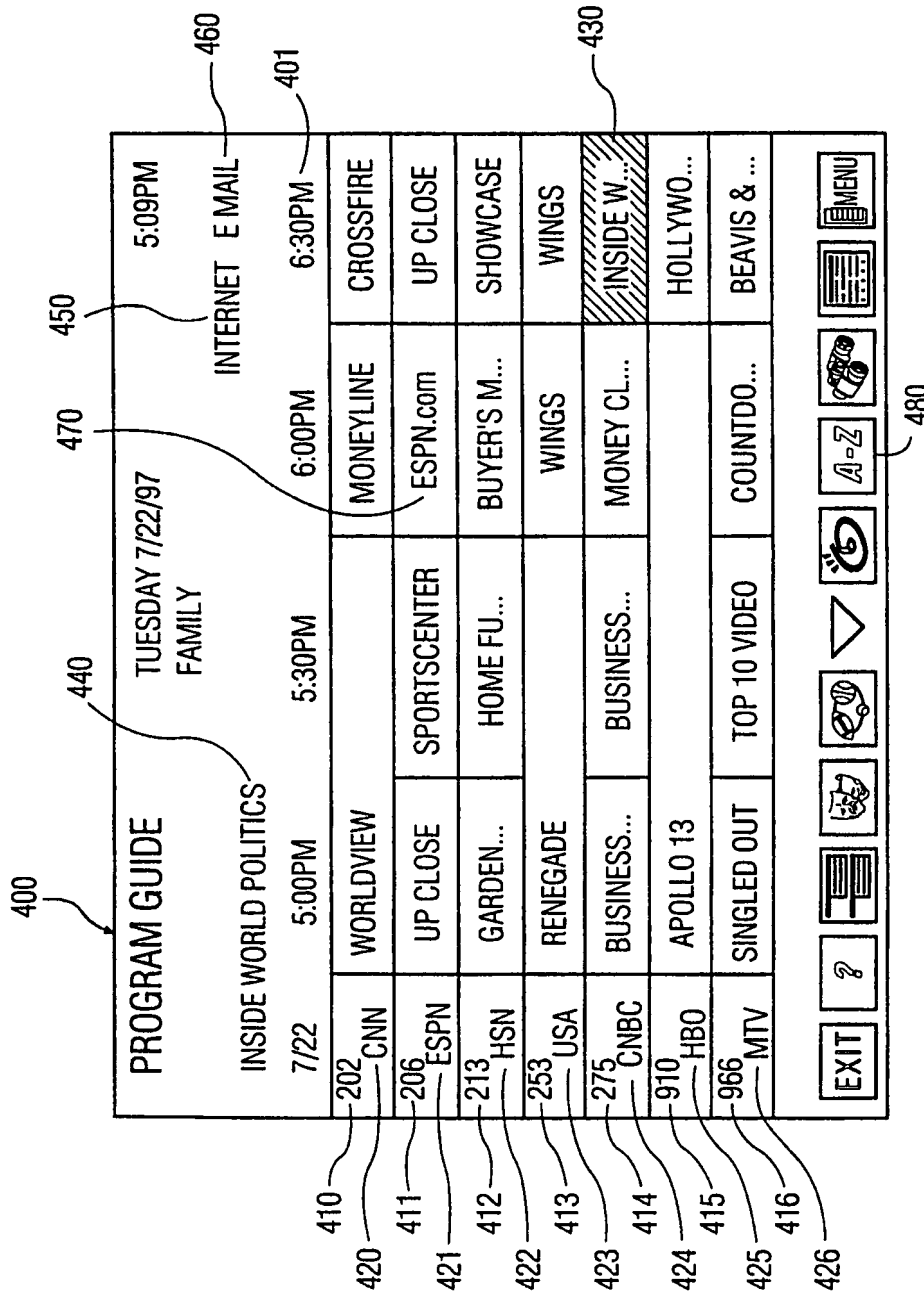


FIG. 4

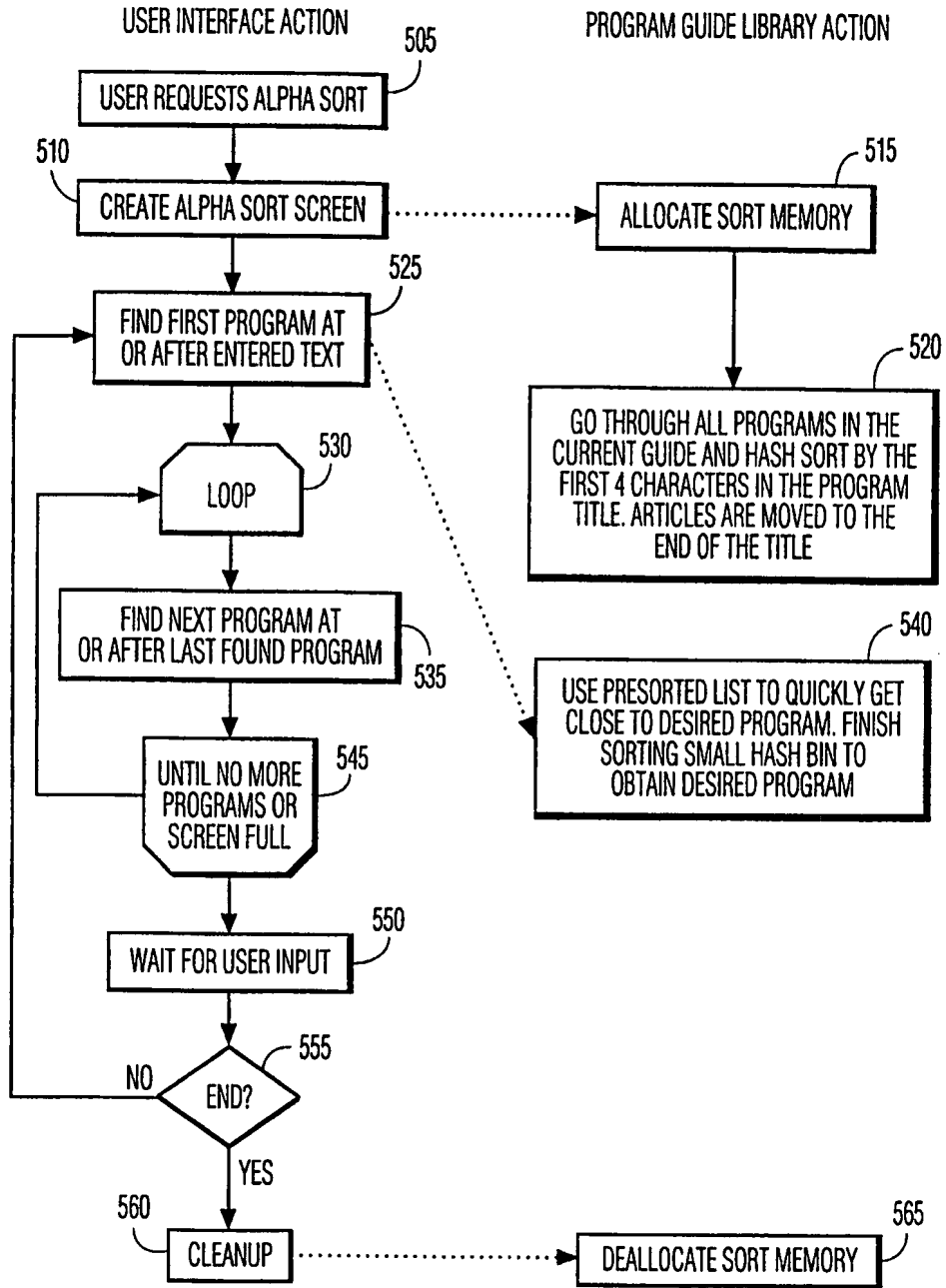


FIG. 5

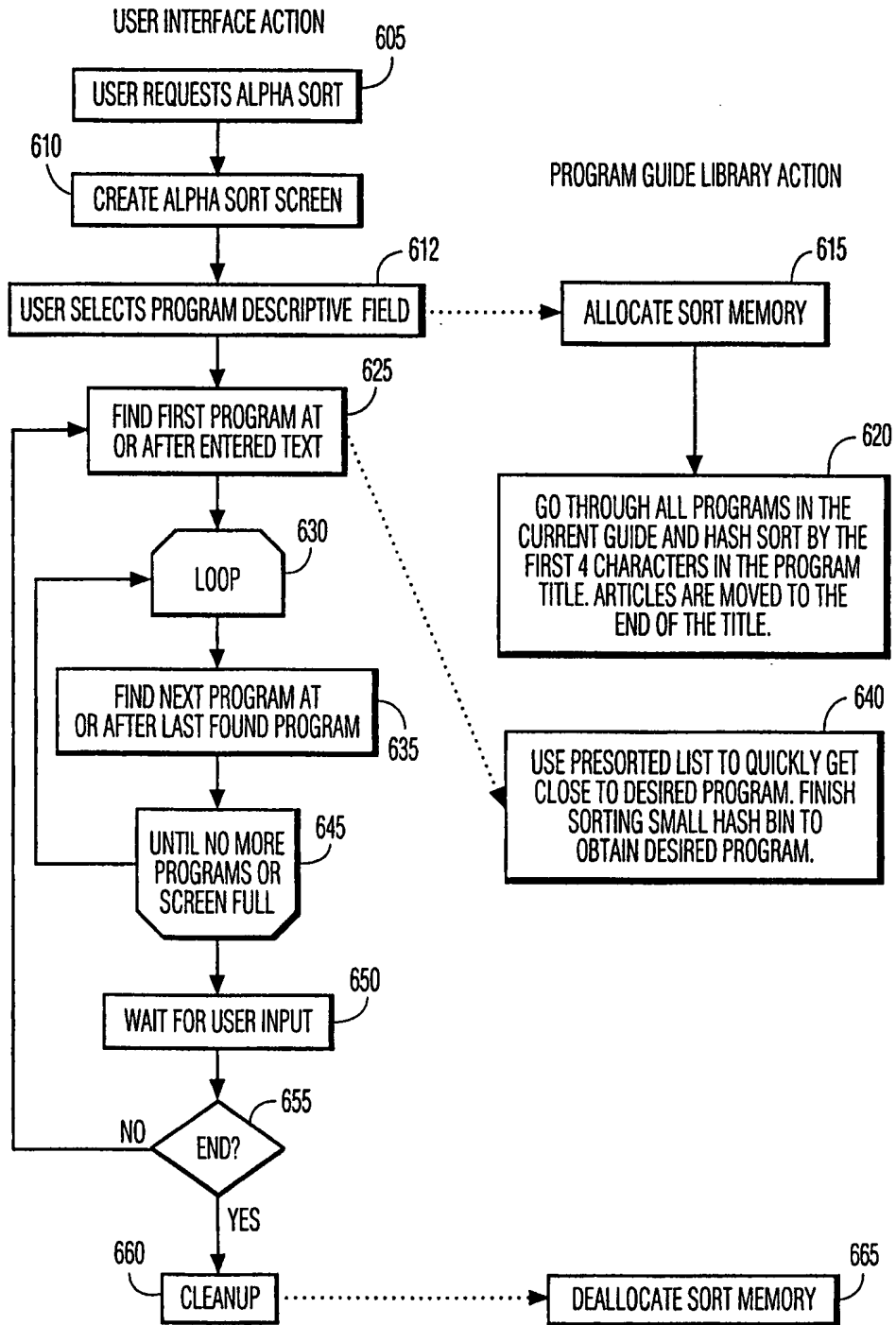


FIG. 6

7/9

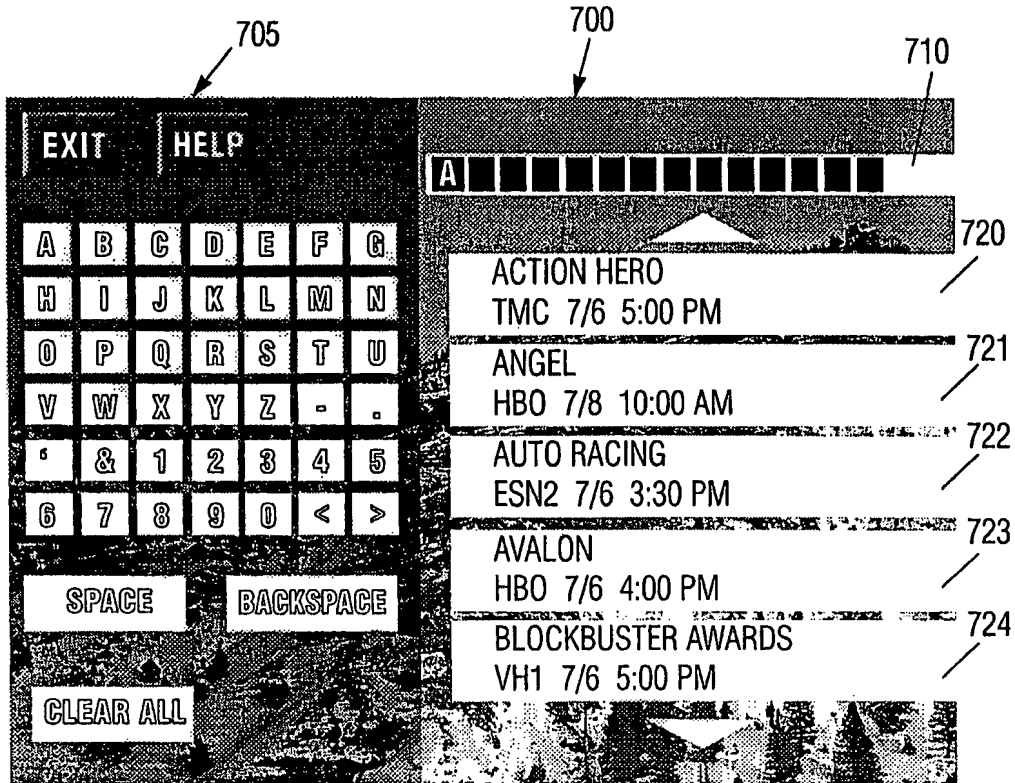


FIG. 7

8/9

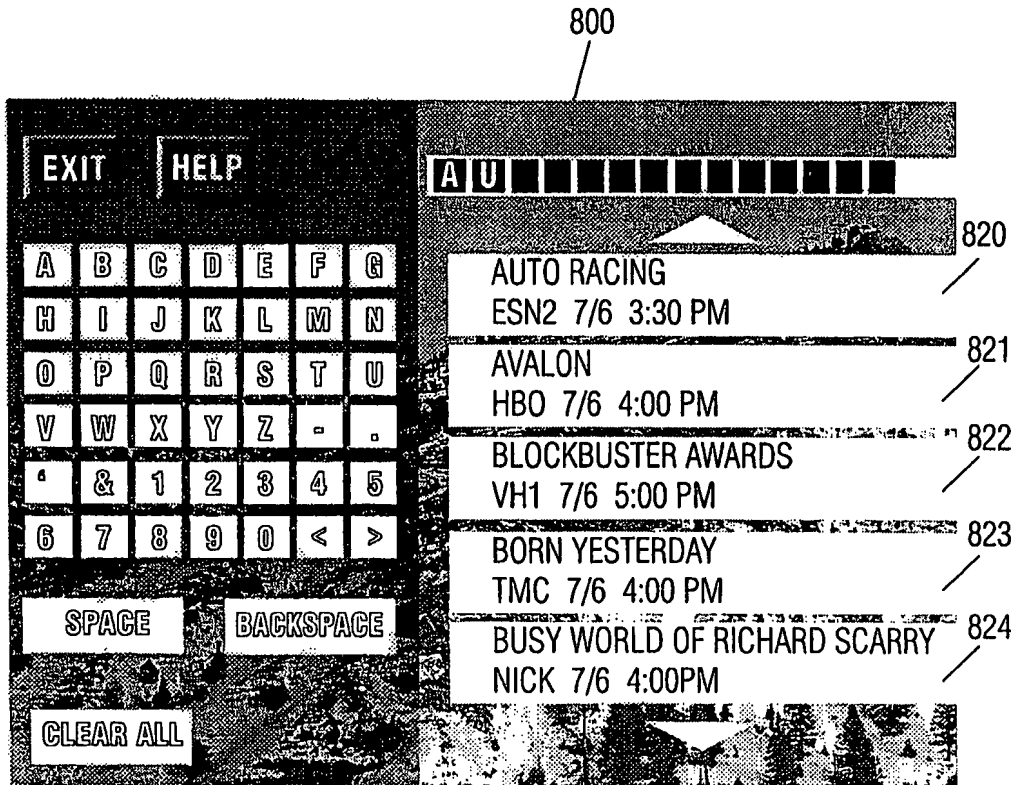


FIG. 8

9/9

901 902 903 904 905 900

TITLE	STAR	DIRECTOR	RATING	CONTENT
-------	------	----------	--------	---------

EXIT HELP

A	B	C	D	E	F	G
H	I	J	K	L	M	N
O	P	Q	R	S	T	U
V	W	X	Y	Z	-	.
'	&	1	2	3	4	5
6	7	8	9	0	<	>

SPACE BACKSPACE

CLEAR ALL

H ■■■■■■■■■■■■■■■■■■■■■■

HARRISON FORD	AIR FORCE ONE 7/6	HBO 3:00 PM
HARRISON FORD	RAIDERS... 7/8	TNT 3:00 AM
TOM HANKS	BIG 7/9	TMC 2:00 PM
TOM HANKS	WOMAN IN RED 7/10	HBO 3:00 PM

920
921
922
923

FIG. 9

INTERNATIONAL SEARCH REPORT

International Application No

PCT/US 98/11636

A. CLASSIFICATION OF SUBJECT MATTER
 IPC 6 H04N5/445 H04N7/088

According to International Patent Classification (IPC) or to both national classification and IPC

B. FIELDS SEARCHED

Minimum documentation searched (classification system followed by classification symbols)
 IPC 6 H04N

Documentation searched other than minimum documentation to the extent that such documents are included in the fields searched

Electronic data base consulted during the international search (name of data base and, where practical, search terms used)

C. DOCUMENTS CONSIDERED TO BE RELEVANT

Category *	Citation of document, with indication, where appropriate, of the relevant passages	Relevant to claim No
X	WO 93 22877 A (ICTV INC) 11 November 1993	1-5, 7-12, 14-16
A	see page 34, line 16 - line 34 see figures 33,36-39	6, 13
X	EP 0 735 749 A (AT & T CORP) 2 October 1996	1-5, 7-12, 14-16
A	see figures 16-22 see page 7, line 25 - line 39	6, 13
	-/--	

Further documents are listed in the continuation of box C

Patent family members are listed in annex

* Special categories of cited documents :

- "A" document defining the general state of the art which is not considered to be of particular relevance
- "E" earlier document but published on or after the international filing date
- "L" document which may throw doubts on priority claim(s) or which is cited to establish the publication date of another citation or other special reason (as specified)
- "O" document referring to an oral disclosure, use, exhibition or other means
- "P" document published prior to the international filing date but later than the priority date claimed

- "T" later document published after the international filing date or priority date and not in conflict with the application but cited to understand the principle or theory underlying the invention
- "X" document of particular relevance; the claimed invention cannot be considered novel or cannot be considered to involve an inventive step when the document is taken alone
- "Y" document of particular relevance; the claimed invention cannot be considered to involve an inventive step when the document is combined with one or more other such documents, such combination being obvious to a person skilled in the art
- "&" document member of the same patent family

Date of the actual completion of the international search

19 August 1998

Date of mailing of the international search report

31/08/1998

Name and mailing address of the ISA
 European Patent Office, P B 5818 Patentlaan 2
 NL - 2280 HV Rijswijk
 Tel (+31-70) 340-2040, Tx 31 651 epo nl,
 Fax: (+31-70) 340-3016

Authorized officer

Berbain, F

INTERNATIONAL SEARCH REPORT

Int. J. Application No
PCT/US 98/11636

C.(Continuation) DOCUMENTS CONSIDERED TO BE RELEVANT		
Category	Citation of document, with indication, where appropriate, of the relevant passages	Relevant to claim No
X	WO 96 17473 A (TV GUIDE ON SCREEN) 6 June 1996 see abstract see figures 38D-F	1-3, 7-10, 14-16
A	see page 47, line 14 - page 48, line 14 -----	4-6, 11-13

INTERNATIONAL SEARCH REPORT

Information on patent family members

International Application No

PCT/US 98/11636

Patent document cited in search report	Publication date	Patent family member(s)	Publication date
WO 9322877 A	11-11-1993	US 5412720 A	02-05-1995
		EP 0638219 A	15-02-1995
		JP 7509817 T	26-10-1995
		US 5526034 A	11-06-1996
		US 5594507 A	14-01-1997
		US 5442700 A	15-08-1995
		US 5485197 A	16-01-1996
		US 5550578 A	27-08-1996
		US 5587734 A	24-12-1996
EP 0735749 A	02-10-1996	CA 2170429 A	29-09-1996
		JP 8292866 A	05-11-1996
WO 9617473 A	06-06-1996	US 5629733 A	13-05-1997
		AU 4502296 A	19-06-1996
		BR 9509826 A	30-09-1997
		CA 2204765 A	06-06-1996
		EP 0806112 A	12-11-1997